

COMPAC Dial Gauges with electrical contacts, type CL

Type CL2

Mechanical dial gauge fitted with 2 electrical contacts. Can be used in conjunction with the COMPAC amplifying unit R43 (No. 044285).



Factory standard

Rotating dial

Full-metal housing. Plunger and 8h6 dia. stem in stainless steel, hardened and ground.

Shock proof system to protect the movement

Adjustable tolerance markers on models with a 58 mm dial diameter.

Measuring insert with a M2,5 coupling thread. Also with revolution counter.

Mounted insert with a 3 mm dia. steel ball tip.

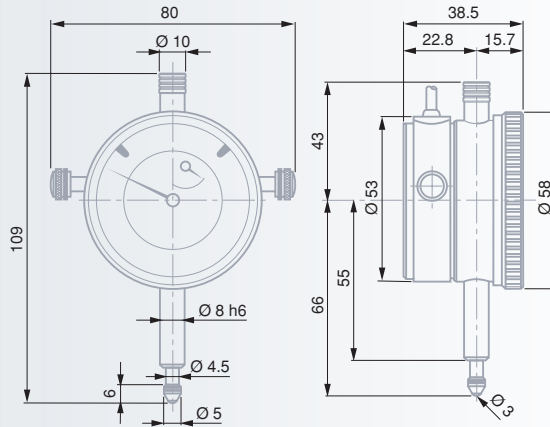
Electrical contacts accurate to 0,001 mm.

Power supply: 10 μ A, 12 V.
Response time: 0,1 s.

Cardboard box

Serial number

Inspection report with a declaration of conformity



Metric models

No	mm	mm	mm	mm*	μ m	μ m	μ m	N	
CL2532	0,01	58	3	0,5 ÷ 1,5	0 ÷ 50 ÷ 100	17	3	3	$\leq 1,5$
CL2532G	0,01	82	3	0,5 ÷ 1,5	0 ÷ 50 ÷ 100	17	3	3	$\leq 1,5$
CL2555	0,002	58	3	0,5 ÷ 1,5	0 ÷ 10 ÷ 20	14	1,5	2	$\leq 1,5$
CL2556	0,001	58	3	0,5 ÷ 1,5	0 ÷ 10 ÷ 20	14	1,5	2	$\leq 1,5$

Inch models

No	in	mm	in	in*	μ m	in	in	in	N
CL2533A	0.0005	58	0.120	0.020 ÷ .060	0 ÷ 25 ÷ 50	0.0007	0.00015	0.00015	$\leq 1,5$
CL2555A	0.0001	58	0.120	0.020 ÷ .060	0 ÷ 5 ÷ 10	0.00055	0.00006	0.00008	$\leq 1,5$

* Setting limit values

