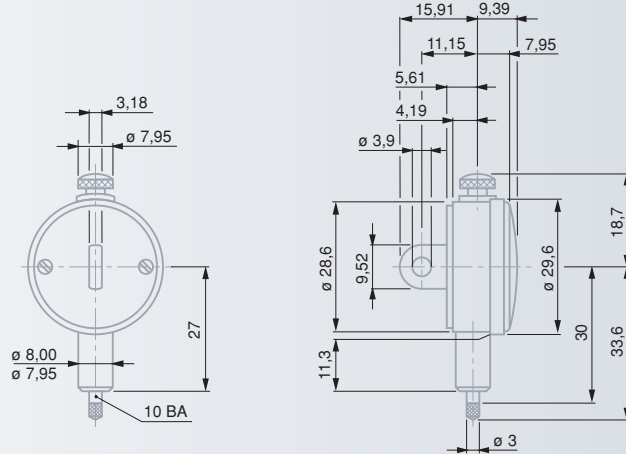


MERCER Precision Dial Gauges – Standard Series 70, dial diameter to 1 1/8 in or 29 mm



Factory standard or EN ISO 463 for metric models



See table opposite



2,25 mm or 0,9 mm



Rotating dial



Full-metal case housing. Fixing shank and plunger in hardened stainless steel



Without shock proof mechanism



Back with central lug. Measuring insert with a 10BA thread.



See in the table opposite



Mounted insert with a 3 mm dia. steel ball tip



Cardboard box



Identification number



Inspection report with a declaration of conformity

Models to 0.001 or 0.0001 in

No	=	in	in	in	in	in	in	N
Standard line								
01426050	71	0.001	0.04	0.05	–	0.04	0 ÷ 20 ÷ 0	≤ 1,5
01426051	73	0.0001	0.01	0.05	–	0.01	0 ÷ 5 ÷ 0	≤ 1,5

Models to 0,01 or 0,002 mm

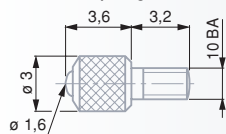
No	=	mm	mm	mm	mm	mm	mm	N
Standard line								
01416050	72	0,01	1	1,2	–	1	0 ÷ 50 ÷ 0	≤ 1,5
01416051	74	0,002	0,2	1,2	–	0,2	0 ÷ 10 ÷ 0	≤ 1,5

Permissible limits of a metrological characteristic (MPE/MPL)

	0.001 in	0.0001 in	0,01 mm	0,002 mm
Deviation span	0.0005 in	0.0005 in	10 µm	6 µm
Total deviation span	0.0008 in	0.0007 in	13 µm	9 µm
Repeatability limit	0.0003 in	0.0002 in	3 µm	2 µm
Max. hysteresis	0.0003 in	0.0002 in	3 µm	3 µm

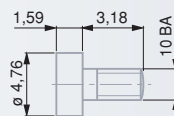
Accessories for MERCER dial gauges, series 70

10BA coupling thread



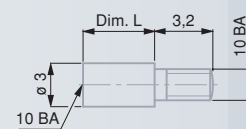
Standard insert with spherical measuring faces.

No		mm
03560072	Steel	1,6
03560073	Carbide	1,6



Measuring insert with a flat measuring face.

No		mm
03560074	Steel	4,76

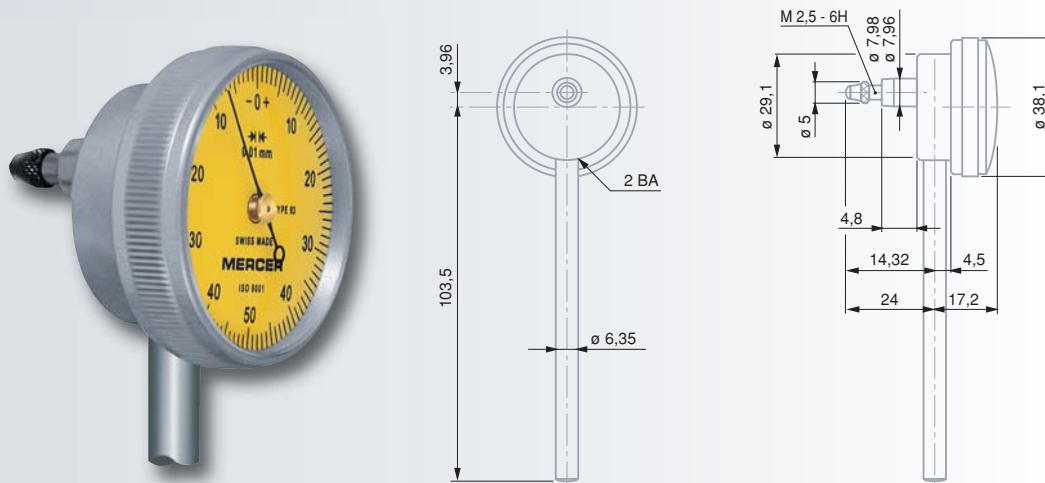


Extensions for measuring inserts.

No	mm
03560075	12,7
03560076	19,05
03560077	25,4

MERCER Precision Dial Gauges – Standard

Series 90, dial diameter to 1 1/2 in or 38 mm, back mounted plunger



Factory standard or EN ISO 463 for metric models

0,001 in and 0,01 mm

2,4 mm or 1,2 mm

Rotating dial

Full-metal case housing. Fixing shank and plunger in hardened stainless steel.

Without shock proof mechanism

Measuring insert with a M2,5 thread. Also with a 6,35 mm dia. holding rod that can be unscrewed.

See table opposite

Mounted insert with a 3 mm dia. steel ball tip

Cardboard box

Identification number

Inspection report with a declaration of conformity

Models to 0.001 in

Model	Resolution	Scale	Range	Accuracy	Material	Temperature	Max. Error
01426060	91	0.001 in	0.05 in	0.14 in	–	0.05	0 ÷ 25 ÷ 0 ≤ 1,5
01426061	92	0.001 in	0.05 in	0.14 in	–	0.05	0 ÷ 25 ÷ 50 ≤ 1,5

Models to 0,01 mm

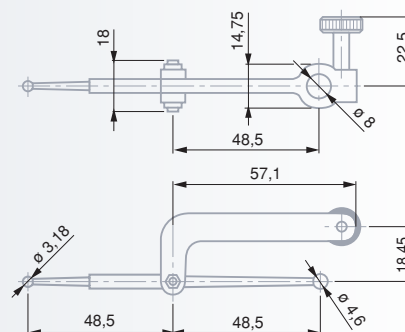
Model	Resolution	Scale	Range	Accuracy	Material	Temperature	Max. Error
01416060	93	0,01 mm	1 mm	3,5 mm	–	1	0 ÷ 50 ÷ 0 ≤ 1,5
01416061	94	0,01 mm	1 mm	3,5 mm	–	1	0 ÷ 50 ÷ 100 ≤ 1,5

Maximum permissible errors for a metrological characteristic (MPE)

Resolution	0.001 in	0,01 mm
Deviation span	0.0010 in	25 µm
Total deviation span	0.0015 in	40 µm
Repeatability limit	0.0005 in	12 µm
Max. hysteresis	0.0005 in	12 µm

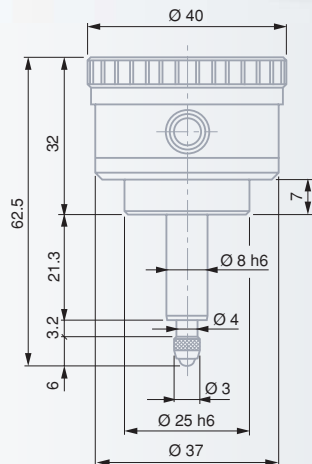
Accessories for MERCER dial gauges, series 90

Model	Amplification
03560078	1 : 1



COMPAC Dial Gauges

40 mm dial diameter, back mounted plunger



EN ISO 463
Factory standard



Rotating dial



Full-metal case housing. Fixing shank and plunger in hardened stainless steel.



Shock proof system to protect the movement



Adjustable tolerance markers.

Measuring insert with a M2,5 coupling thread. Fastening sleeve with a 8h6 or 25h6 stem diameter.



Mounted insert with a 3 mm ball tip dia.



Cardboard box



Serial number



Inspection report with a declaration of conformity

No	mm	mm	mm	mm	µm	µm	µm	N	
CP 352	0,01	3	3,2	1	0÷50÷100	14	3	3	0,9
CP 352S	0,01	± 0,4	3,2	(1)	40÷0÷40	9	3	3	0,9
CP 353	0,01	3	3,2	0,5	0÷25÷50	14	3	3	0,9
CP 355	0,002	3	3,2	0,2	0÷10÷20	14	2	2,5	0,9
CP 355S	0,002	± 0,08	3,2	(0,2)	8÷0÷8	9	2	2,5	0,9

S: Models with a reduced range of indication.

Since the pointer travels less than one revolution, all reading errors due to the revolution counter are eliminated.